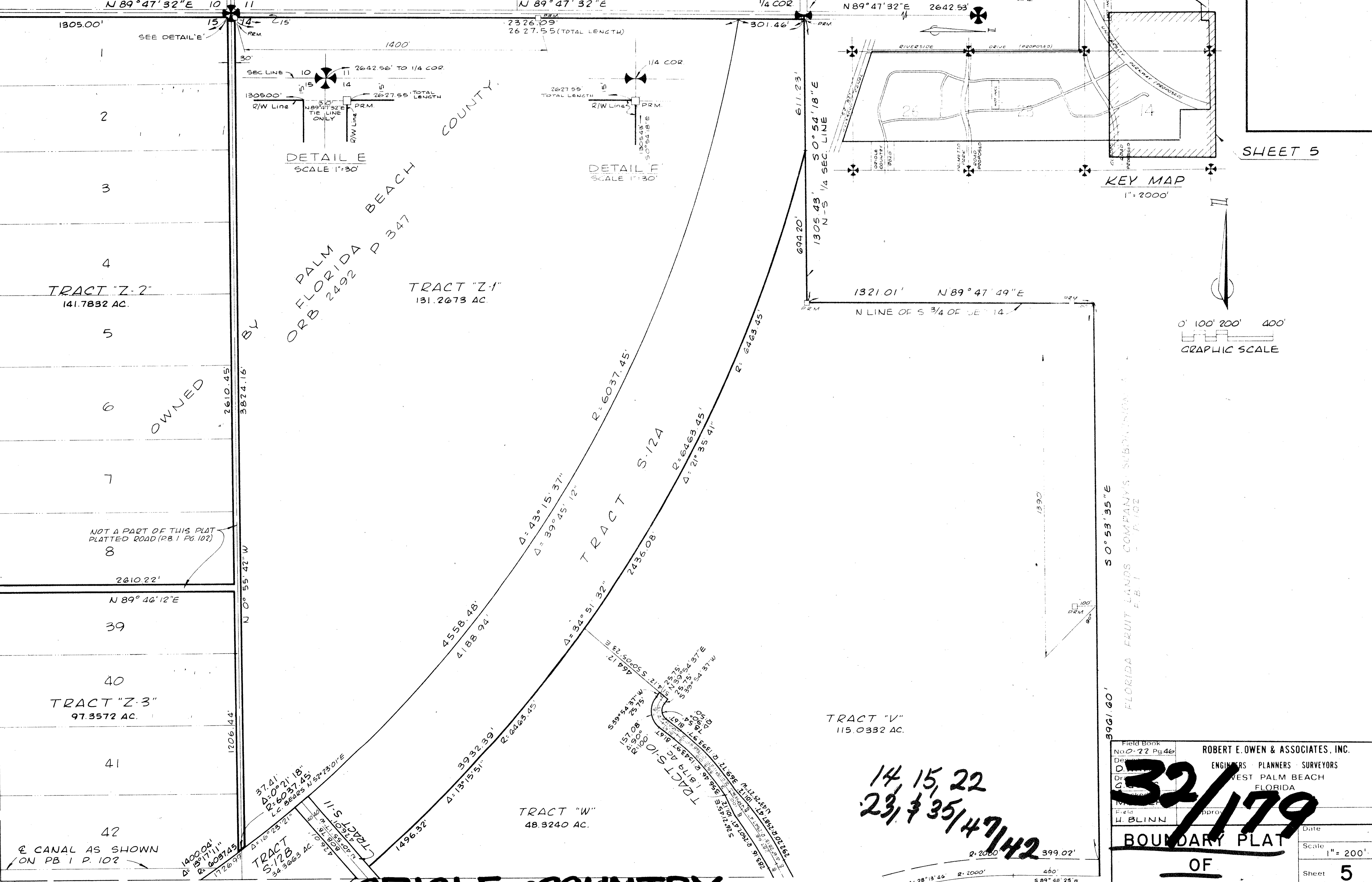


BOUNDARY PLAT OF ORIOLE COUNTRY

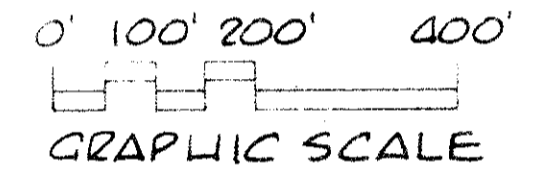
179

FLORIDA FRUIT LANDS COMPANY'S SUBDIVISION NO. 2 P.B. 1 P. 102



SHEET 5

KEY MAP
1" = 2000'



14, 15, 22
23, 35, 47, 42

| | |
|-------------------------------|---|
| Field Book No. 0-22 Pg. 46 | ROBERT E. OWEN & ASSOCIATES, INC. ENGINEERS - PLANNERS - SURVEYORS WEST PALM BEACH FLORIDA |
| 32/179 | |
| Date | |
| Scale | 1" = 200' |
| Sheet | 5 |
| of | 6 |
| File | BF-2250 |